

phyBOARD-Wega-AM335x

QuickStart Guide

Kit Contents
phyBOARD-Wega-AM335x

2-pin-Phoenix

CD/DVD

RS-232 and CAN Adapter

Get your phyBOARD-Wega powered up and connected in just a few steps.

1. Check the kit contents (see overview on the right hand side)
2. Have your connection cables at hand: You need an RS232 cable (one-to-one) and an Ethernet cross-over cable. Phytex - offers an accessory kit which includes these cables.
3. Power-up phyBOARD-Wega. For the 24V-kit-version (A): Connect the 2-pin-Phoenix-connector (part of the kit delivery) to a 12-24V (+-10%) DC power supply. For the 5V-kit-version (B): Connect the 2-pin-Phoenix-connector (part of the kit delivery) to a 5V (+-5%) DC power supply. In both cases mind the polarity (see picture A/B)! If you have bought the optional power supply with your Kit, it comes already with the 2-pin-connector wired.
4. Turn your power supply on: Plug the 2-pin-Phoenix connector into the green jack of your Kit.

The green Power LED (D58) will light up.

Please note: only the 24V-kit-version comes with the power adapter board.



Optional Accessories

Power Module 12-24V (PEB-POW-01)



Additional Equipment required

Wall Adapter 5 V or 24 V



RS-232 Cable



Ethernet Cable



Eval Module (PEB-EVAL-01)



HDMI Adapter (PEB-AV-01)



Expansion Connector

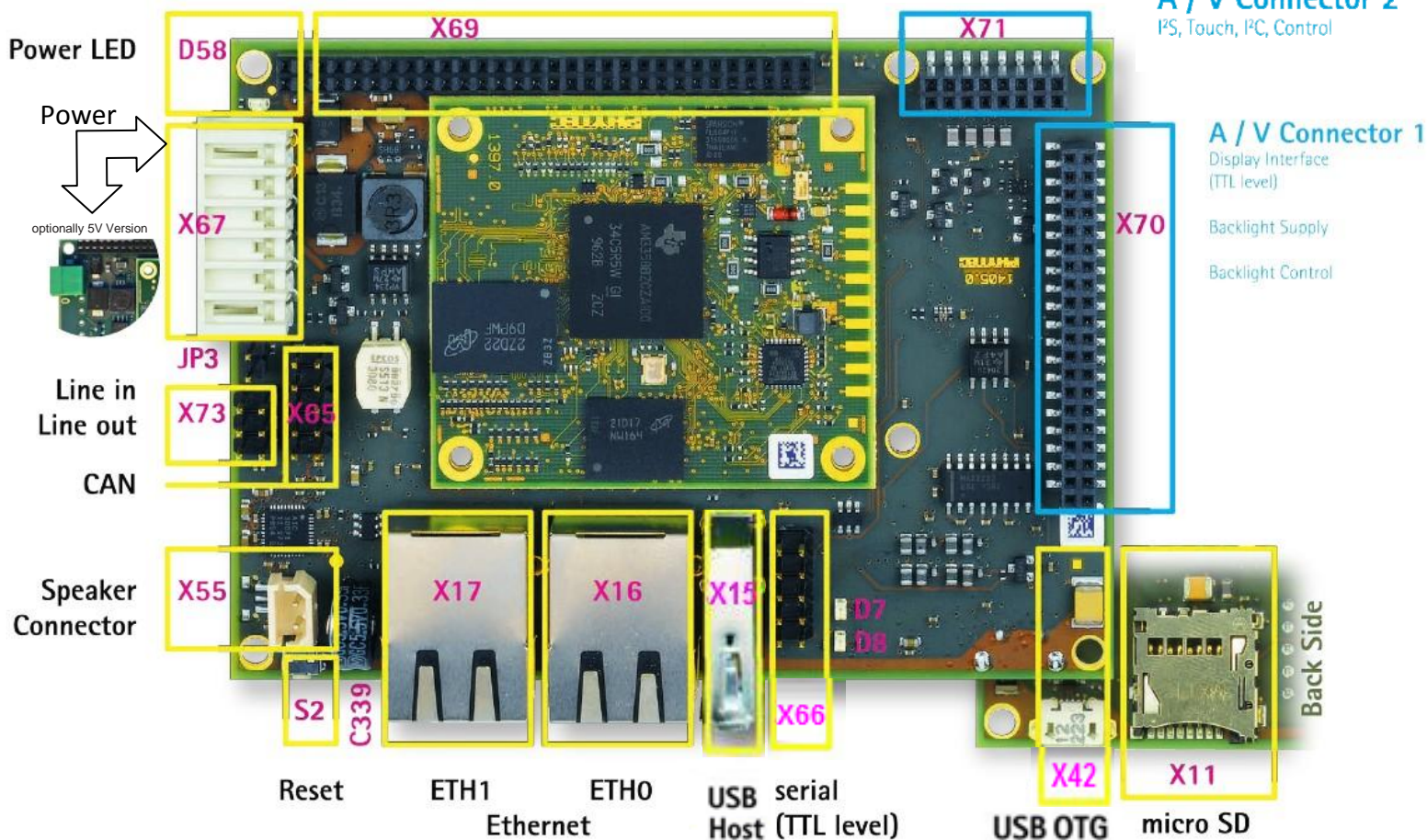
3x serial (TTL level), I²C, SPI, USB Host, 4x GPIO
4x analog in, Control, MMC

A / V Connector 2

I²S, Touch, I²C, Control

A / V Connector 1

Display Interface (TTL level)
Backlight Supply
Backlight Control



PHYTEC

India
PHYTEC Embedded Pvt. Ltd.
#9/1C, 3rd Floor, 3rd Main,
8th Block, Kormangala,
Bangalore-560095, Karnataka
Phone: +91 80 40867046
www.phytec.in

Germany
PHYTEC Messtechnik GmbH
Robert-Koch-Straße 39
D-55129 Mainz
Phone: +49 6131 9221-32
Fax: +49 6131 9221-33
www.phytec.de

USA
PHYTEC America LLC
203 Parfitt Way SW, Suite G100
Bainbridge Island, WA 98110
Phone: +1 206 780-9047
Fax: +1 206 780-9135
www.phytec.com

France
PHYTEC France SARL
17, place St. Etienne
F-72140 Sillé le Guillaume
Phone: +33 2 43 29 22 33
Fax: +33 2 43 29 22 34
www.phytec.fr

Quick Start Guide

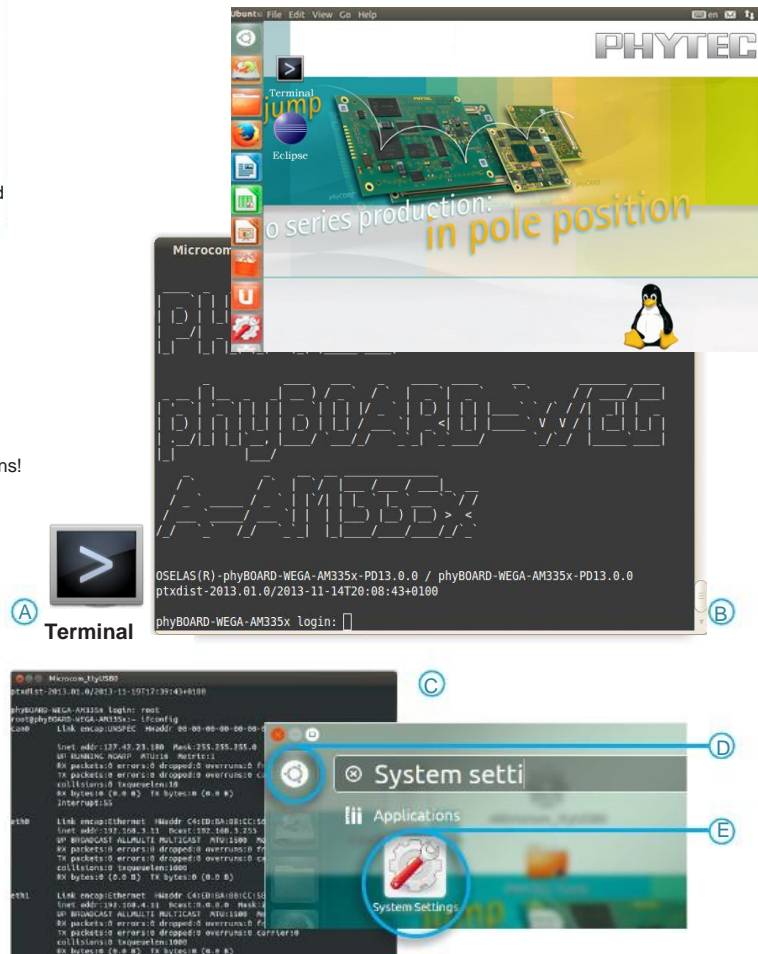
2) Getting Connected

Serial connection

1. Connect one end of the serial cable to the DB9 connector adapter (X66) on Wega Board
2. Connect the other end to the first serial interface of your PC (or to an USB-to-DB9-dongle, connected to your host).
3. Click the **Terminal** icon (A) on the Ubuntu desktop (for serial interface connection).
4. Click the reset button (S2) on the Wega board (or Power OFF-&ON the Wega board).

A serial console will start when you reset the Wega-Board.
You should see a boot message and the login-prompt on this console (B). Congratulations!

5. Use "root" as the log-in-name on the serial console (and press enter).
6. As a good example (and helpful for understanding the next step) you might enter the command **ifconfig**. This shows you especially the configuration of the two Ethernet interfaces on the Wega module. (C)

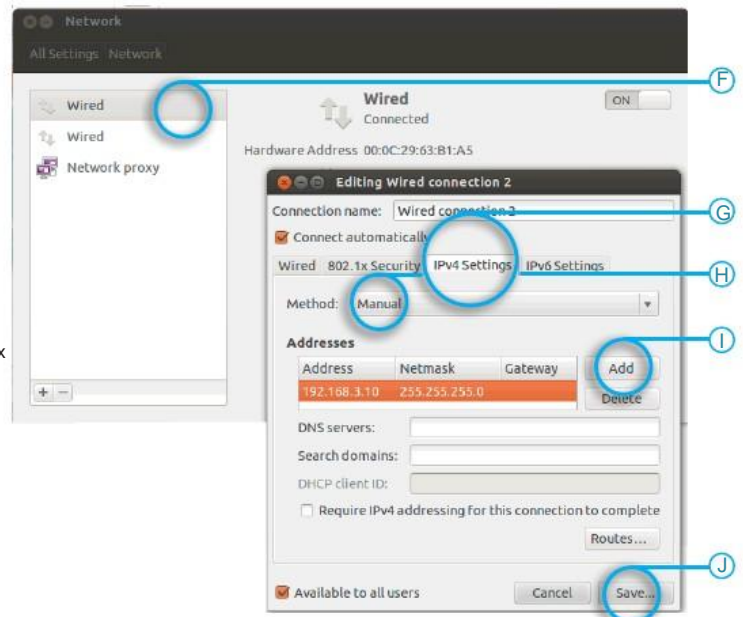


Ethernet connection

We recommend disconnecting your host-PC from any other network, because a peer-to-peer connection from your PC to the Wega module will be established.

1. Connect your preferred Ethernet-interface on your PC with ETH0 (X16) on the Wega module using the Ethernet cable.
2. Configure the IP-settings on your host platform in Ubuntu:
 - In the Unity-panel (left side of your desktop) click on the Dash Home icon (D)
 - A new window opens; enter System Settings in the search field (you will see the corresponding icon showing up already during typing of the search string).
 - Open System Settings (E) and Click on the Network icon
 - Select the physical interface to which you have connected the Ethernet (F) cable (if you have more than one network in the list) and click on Options
 - Select the IPv4Settings tab (G) and choose Manual (H) in the Method drop down box
 - Click Add (I) and enter the IP address 192.168.3.10, 255.255.255.0 as subnet mask and 192.168.3.10 as Gateway.
 - At last click on Save (J) to save this connection settings and close the windows.

You are now ready to test the Ethernet network connection



Telnet Login:

Click on the **Terminal** on your desktop and type the below command

```
# telnet ip-address.
```

```
Ex: #telnet 192.168.3.11
```

You will see the login prompt for phyBOARD-WEGA (Remember: login-name is "root") (K)
Congratulations.

